

Job Name:

System Reference:

Date:



Outdoor Unit: MXZ-2C20NAHZ2

ACCESSORIES

The outdoor unit is delivered with the base pan heater factory installed.

Airflow Guide (PAC-SH96SG-E)

3/8" x 1/2" Port Adapter

(MAC-A454JP; for use with 15,000 Btu/h Indoor units)

M-NET Adapter (PAC-IF01MNT-E)

(For data on specific indoor units, see the MXZ-C Technical and Service Manual.)

Specifications			Model Name
Unit Type			MXZ-2C20NAHZ2
Cooling* (Non-ducted / Ducted)	Rated Capacity	Btu/h	18,000 / 20,000
	Capacity Range	Btu/h	12,600 - 20,000
	Rated Total Input	W	1,334 / 1,819
Heating at 47°F* (Non-ducted / Ducted)	Rated Capacity	Btu/h	22,000 / 22,000
	Capacity Range	Btu/h	11,400 - 25,500
	Rated Total Input	W	1,612 / 1,748
Heating at 17°F* (Non-ducted/Ducted)	Rated Capacity	Btu/h	13,700 / 13,700
	Maximum Capacity	Btu/h	22,000 / 22,000
	Rated Total Input	W	1,450 / 1,588
Heating at 5°F*	Maximum Capacity	Btu/h	22,000
Connectable Capacity		Btu/h	12,000 - 24,000
Energy Star® (ENERGY STAR products are third-party certified by an EPA-recognized Certification Body.)			Yes
Electrical Requirements	Power Supply	Voltage, Phase, Hertz	208 / 230V, 1-Phase, 60 Hz
	Recommended Fuse/Breaker Size	A	40
	MCA	A	29.5
Voltage	Indoor - Outdoor S1-S2	V	AC 208 / 230
	Indoor - Outdoor S2-S3	V	DC ±24
Compressor		DC INVERTER-driven Twin Rotary	
Fan Motor (ECM)		F.L.A.	2.43
Sound Pressure Level	Cooling	dB(A)	54
	Heating	dB(A)	58
External Dimensions (H x W x D)		In mm	41-9/32 x 37-13/32 x 13 1048 x 950 x 330
Net Weight		Lbs / kg	187 / 85
External Finish		Munsell No. 3Y 7.8/11	
Refrigerant Pipe Size O.D.	Liquid (High Pressure)	In / mm	1/4 / 6.35
	Gas (Low Pressure)	In / mm	A,B: 3/8 / 9.52
Max. Refrigerant Line Length		Ft / m	164 / 50
Max. Piping Length for Each Indoor Unit		Ft / m	82 / 25
Max. Refrigerant Pipe Height Difference	If IDU is Above ODU	Ft / m	49 / 15
	If IDU is Below ODU	Ft / m	49 / 15
Connection Method		Flared/Flared	
Refrigerant		R410A	

* Rating Conditions per AHRI Standard:

Cooling | Indoor: 80° F (27° C) DB / 67° F (19° C) WB

Cooling | Outdoor: 95° F (35° C) DB / W.B. 23.9° C (75° F)

Heating at 47° F | Indoor: 70° F (21° C) DB / 60° F (16° C) WB

Heating at 47° F | Outdoor: 47° F (8° C) DB / 43° F (6° C) WB

Heating at 17° F | Indoor: 70° F (21° C) DB

Heating at 17° F | Outdoor: 17° F (-8° C) DB / 15° F (-9° C) WB

SPECIFICATIONS: MXZ-2C20NAHZ2

OPERATING RANGE:

	Outdoor
Cooling	D.B. 14 to 115° F [D.B. -10 to 46° C]*1
Heating	W.B. -13 to 65° F [W.B. -25 to 18° C]

ENERGY EFFICIENCIES:

Indoor Unit Type	SEER	EER	HSPF	COP @ 47°F	COP @ 17°F
Non-ducted (09 + 09)	17.0	13.5	9.8	4.00	2.77
Ducted and Non-ducted	16.00	12.25	9.65	3.85	2.65
Ducted (09 + 12)	15.0	11.0	9.5	3.69	2.53
Specific combination (FH09+FH09)	17.15	14.3	10.0	4.37	2.88

NOTES:

- Minimum of two Indoor Units must be connected to the MXZ-2C20NAHZ2.
- Minimum installed capacity cannot be less than 12,000 Btu/h.
- Total connected capacity must not exceed 130% of outdoor unit capacity.
- System can operate with only one Indoor Unit turned on.
- Information provided at 208/230V.
- For Reference:
 - MXZ-C Technical & Service Manual for detailed specifications and additional information per Indoor Unit Combination.
 - MXZ Series Multi-Zone Indoor/Outdoor Combination Table for allowed unit combinations.

MVZ CONNECTION RULES:

- Only 1 MVZ may be used on any system.
- When an MVZ is connected, total connected capacity must be 100% or less.
- When an MVZ is connected, no P-Series indoor units can be used (PCA, PLA, or PEAD).

NOTES:

MXZ-2C20NAHZ2 OPERATIONAL PERFORMANCE

NON-DUCTED:

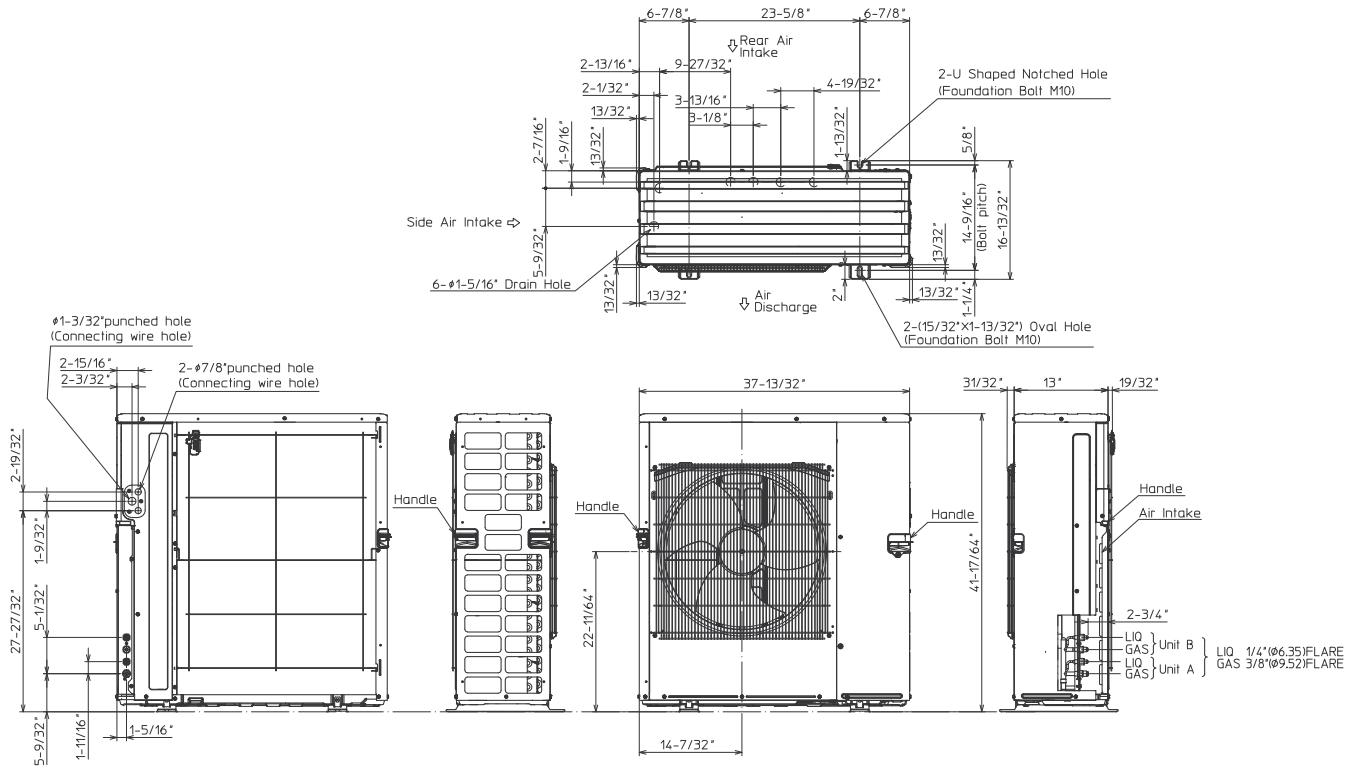
# of indoor unit	Total Nominal Capacity (x1000 Btu/h)	Total Indoor Unit Capacity (Btu/h)	Operational Performance for Indoor Unit Combinations (Unit A + Unit B + Unit C)	Cooling Capacity Range (Btu/h)		
				Heating Capacity Range (Btu/h)		
				Unit A	Unit B	Unit C
1	6	6,000	6	6,000	-	-
		7,400		7,400	-	-
1	9	9,000	9	9,000	-	-
		11,000		11,000	-	-
1	12	12,000	12	12,000	-	-
		14,400		14,400	-	-
1	15	14,000	15	14,000	-	-
		18,000		18,000	-	-
2	12	12,000	6 + 6	6,000	6,000	-
		14,800		7,400	7,400	-
2	15	15,000	6 + 9	6,000	9,000	-
		18,400		7,400	11,000	-
2	18	18,000	6 + 12	6,000	12,000	-
		22,000		7,500	14,500	-
2	18	18,000	9 + 9	9,000	9,000	-
		22,000		11,000	11,000	-
2	21	20,000	6 + 15	6,000	14,000	-
		22,000		6,400	15,600	-
2	21	20,000	9 + 12	8,600	11,400	-
		22,000		9,500	12,500	-
2	24	20,000	9 + 15	7,800	12,200	-
		22,000		8,300	13,700	-
2	24	20,000	12 + 12	10,000	10,000	-
		22,000		11,000	11,000	-

DUCTED:

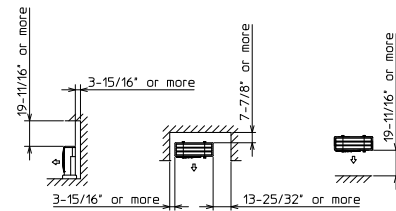
# of indoor unit	Total Nominal Capacity (x1000 Btu/h)	Total Indoor Unit Capacity (Btu/h)	Operational Performance for Indoor Unit Combinations (Unit A + Unit B + Unit C)	Cooling Capacity Range (Btu/h)		
				Heating Capacity Range (Btu/h)		
				Unit A	Unit B	Unit C
1	9	9,000	9	9,000	-	-
		10,900		10,900	-	-
1	12	12,000	12	12,000	-	-
		13,600		13,600	-	-
1	15	15,000	15	15,000	-	-
		18,000		18,000	-	-
2	18	18,000	9 + 9	9,000	9,000	-
		21,800		10,900	10,900	-
2	21	20,000	9 + 12	8,600	11,400	-
		22,000		9,800	12,200	-
2	24	20,000	9 + 15	7,500	12,500	-
		22,000		8,300	13,700	-
2	24	20,000	12 + 12	10,000	10,000	-
		22,000		11,000	11,000	-

DIMENSIONS: MXZ-2C20NAH2

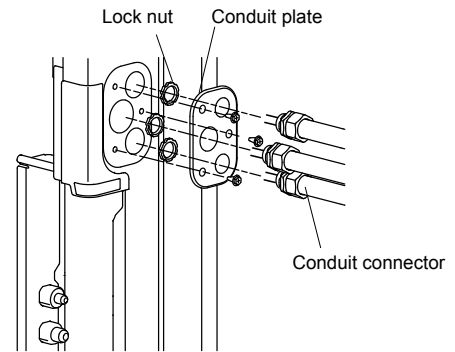
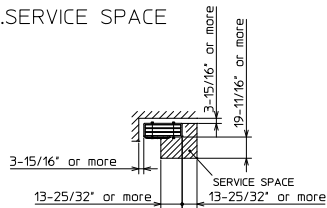
Unit: inch



1. FREE SPACE



2. SERVICE SPACE



COOLING & HEATING

1340 Satellite Boulevard, Suwanee, GA 30024
Toll Free: 800-433-4822 www.mehvac.com

