

Job Name:

System Reference:

Date:

APPLIES TO INDOOR UNIT:

- SEZ-KD12NA4
- SEZ-KD12NA4.TH
- SEZ-KD12NAR1.TH
- SEZ-KD12NA4R1.TH



GENERAL FEATURES

- Concealed horizontal-ducted unit for applications with short duct runs
- Quiet operation
- Ultra-thin body: 7-7/8" high
- Built-in condensate lift mechanism
- Multiple control options available:
 - kumo cloud[®] smart device app for remote access
 - Third-party interface options
 - Wired or wireless controllers

SPECIFICATIONS: SEZ-KD12NA4

Cooling Capacity ^{1, 3}		Btu/h	11,500
Heating Capacity ^{2, 3}		Btu/h	13,600
Electrical	Voltage, Phase, Frequency		208/230V, 1 phase, 60Hz
	Guaranteed Voltage Range		V AC 187-253
	Voltage: Indoor - Outdoor, S1-S2		V AC 208/230
	Voltage: Indoor - Outdoor, S2-S3		V DC 24
	Voltage: Indoor - Remote controller		V DC 12
MCA		A	1
Blower Motor Full Load Amperage		A	0.57
Blower Motor Output		W	96
Airflow Rate at Cooling, Dry		CFM	388-317-247
Airflow Rate at Cooling, Wet		CFM	349-285-222
Airflow Rate at Heating, Dry		CFM	388-317-247
Sound Pressure Level (Cooling)		dB(A)	33-28-23
Sound Pressure Level (Heating)		dB(A)	33-28-23
External Static Pressure		in.WG	0.02-0.06-0.14-0.20
Drain Pipe Size		In. (mm)	1 1/4 (32)
Condensate Lift Mechanism, Maximum Distance		In. (mm)	21-21/32 (550)
Heat Exchanger Type		Plate fin coil	
External Finish Color		Galvanized	
Unit Dimensions	W: In. (mm)		39 (990)
	D: In. (mm)		27 9/16 (700)
	H: In. (mm)		7 7/8 (200)
Package Dimensions	W: In. (mm)		47 1/4 (1,200)
	D: In. (mm)		35 7/16 (900)
	H: In. (mm)		14 3/16 (360)
Unit Weight		Lbs. (kg)	50 (22)
Package Weight		Lbs. (kg)	73 (33)
Refrigerant	Type		R410A
	Charge	Lbs, oz	2, 9

Notes:

Nominal Conditions	¹ Cooling (Indoor // Outdoor)	°F	80 DB, 67 WB // 95 DB, 75 WB
	² Heating at 47°F (Indoor // Outdoor)	°F	70 DB, 60 WB // 47 DB, 43 WB

³Capacity varies based on the number of indoor units operating and the model of the Multi-zone Outdoor Unit. For reference to connected capacity charts, please refer Multi-zone Outdoor Unit Operational Performance.

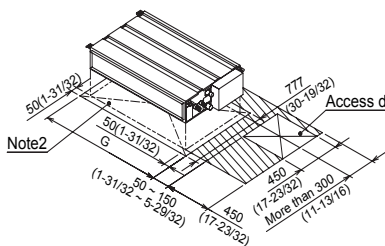
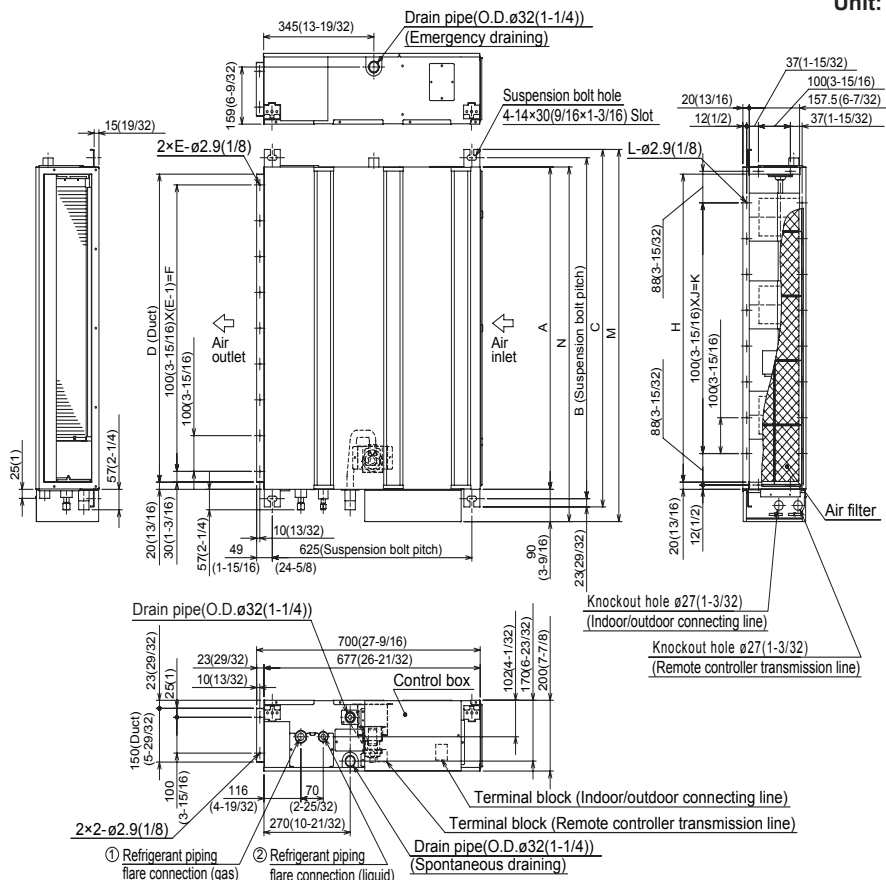
ACCESSORIES: SEZ-KD12NA4

Filter Box with MERV 8 Filters	<input type="checkbox"/> FBL 1-2
Signal Receiver	<input type="checkbox"/> PAR-SA9CA-E
Wireless Remote Controller	<input type="checkbox"/> PAR-FL32MA-E
Wireless Remote Receiver	<input type="checkbox"/> PAR-FA32MA-E
Backlit, Wall-mounted, Wireless Controller	<input type="checkbox"/> MHK1
Portable Central Controller	<input type="checkbox"/> MCCH1
Wired MA Controller	<input type="checkbox"/> PAR-33MAA
Simple MA Controller	<input type="checkbox"/> PAC-YT53CRAU
Touch MA Controller	<input type="checkbox"/> PAR-CT01MAU-SB
Wired Remote Sensor	<input type="checkbox"/> PAC-SE41TS-E
Lockdown Bracket for Wireless, Hand-held, Remote Controller	<input type="checkbox"/> RCMKP1CB
Wireless Temperature and Humidity Sensor	<input type="checkbox"/> PAC-USWHS003-TH-1
Outside Air Sensor for MHK1	<input type="checkbox"/> MOS1
Flush Mount Remote Temperature Sensor	<input type="checkbox"/> PAC-USSEN001-FM-1
Wireless Interface	<input type="checkbox"/> PAC-USWHS002-WF-1
Thermostat Interface	<input type="checkbox"/> PAC-US444CN-1
kumo station®	<input type="checkbox"/> PAC-WHS01HC-E
USNAP Interface	<input type="checkbox"/> PAC-WHS01UP-E
IT Extender	<input type="checkbox"/> PAC-WHS01IE-E
BACnet® and MODBUS® Interface	<input type="checkbox"/> PAC-UKPRC001-CN-1
External Fan / Heater Control Relay Adapter	<input type="checkbox"/> CN24RELAY-KIT-CM3
Connector cable for remote display	<input type="checkbox"/> PAC-SA88HA-EP
Connector for CN32 (remote on/off)	<input type="checkbox"/> PAC-SE55RA-E
Remote Operation Adapter (with wire terminals for remote ON/OFF and operation status/ error) ¹	<input type="checkbox"/> PAC-SF40RM-E
Bottom Return Plate (Converts low-profile ducted indoor unit from rear return to bottom return)	<input type="checkbox"/> BRP-2
External Drain Pump	<input type="checkbox"/> PAC-KE07DM-E
Blue Diamond Sensor Extension Cable—15 Ft.	<input type="checkbox"/> C13-103
Blue Diamond Alarm Extension Cable—6.5 Ft.	<input type="checkbox"/> C13-192
Blue Diamond MultiTank—collection tank for use with multiple pumps	<input type="checkbox"/> C21-014
Blue Diamond Rubber Foot Pads	<input type="checkbox"/> F10-010
Mini Condensate Pump—230V application	<input type="checkbox"/> SI30-230
MegaBlue Advanced Blue Diamond Condensate Pump w/ Reservoir & Sensor	<input type="checkbox"/> X87-835 - 110 to 250V
MaxiBlue Advanced Blue Diamond Mini Condensate Pump w/ Reservoir & Sensor (110V) up to 48,000 Btu/h [recommended]	<input type="checkbox"/> X87-711 - 110V
MaxiBlue Advanced Blue Diamond Mini Condensate Pump w/ Reservoir & Sensor (208/230V) up to 48,000 Btu/h [recommended]	<input type="checkbox"/> X87-721 - 208/230V
Drain Pan Level Sensor (Control for indoor unit shut off to prevent drain pan overflow)	<input type="checkbox"/> DPLS2
3 Pole Disconnect Switch (30A/600VUL) [fits 2"X4" utility] - Black	<input type="checkbox"/> TAZ-MS303
3 Pole Disconnect Switch (30A/600VUL) [fits 2"X4" utility] - White	<input type="checkbox"/> TAZ-MS303W
1/4" x 3/8" x 15' / 1/2" Lineset (Twin-Tube Insulation)	<input type="checkbox"/> MLS143812T-15
1/4" x 3/8" x 30' / 1/2" Lineset (Twin-Tube Insulation)	<input type="checkbox"/> MLS143812T-30
1/4" x 3/8" x 50' / 1/2" Lineset (Twin-Tube Insulation)	<input type="checkbox"/> MLS143812T-50
1/4" x 3/8" x 65' / 1/2" Lineset (Twin-Tube Insulation)	<input type="checkbox"/> MLS143812 -65
1/4 x 3/8 x 100' / 1/2" Lineset (Twin-Tube Insulation)	<input type="checkbox"/> MPLS385812 -10

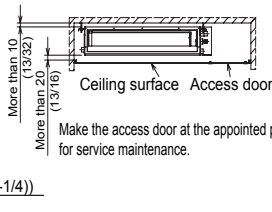
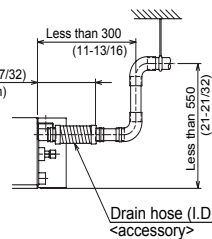
¹ Unable to use with wireless remote controller

DIMENSIONS: SEZ-KD12NA4

Unit: mm (inch)



Required space for service and maintenance



mm (in.)

Sizes	A	B	C	D	E	F	G	H	J	K	L	M	N	① Gas pipe	② Liquid pipe
09 kBTu/h	700 (27-9/16)	752 (29-5/8)	798 (31-7/16)	660 (26)	7	600 (23-5/8)	800 (31-1/2)	660 (26)	5	500 (19-11/16)	16	839 (33-1/16)	790 (31-1/8)	ø9.52(3/8)	ø6.35(1/4)
12 kBTu/h	900 (35-7/16)	952 (37-1/2)	998 (39-5/16)	860 (33-7/8)	9	800 (31-1/2)	1000 (39-3/8)	860 (33-7/8)	7	700 (27-9/16)	20	1039 (40-29/32)	990 (39)		
15 kBTu/h	1100 (43-5/16)	1152 (45-3/8)	1198 (47-3/16)	1060 (41-3/4)	11	1000 (39-3/8)	1200 (47-1/4)	1060 (41-3/4)	9	900 (35-7/16)	24	1239 (48-25/32)	1190 (46-7/8)		
18 kBTu/h														ø12.7(1/2)	

- Note1. Use M10 screw for the suspension bolt (field supply).
 2. Keep the service space for the maintenance at the bottom.
 3. This chart indicates for size 15 kBTu/h model, which has 3 fans.
 Sizes 09, 12 kBTu/h models have 2 fans.
 Sizes 08 kBTu/h model has 4 fans.
 4. When an inlet duct is used, remove the air filter (supply with the unit), then install the filter (field supply) at suction side.



COOLING & HEATING

1340 Satellite Boulevard, Suwanee, GA 30024
 Toll Free: 800-433-4822 www.mehvac.com

